

PRODUCT **PORTFOLIO** BROCHURE



See why FlexHD is 'one of
the most requested ADMs
on the market today.

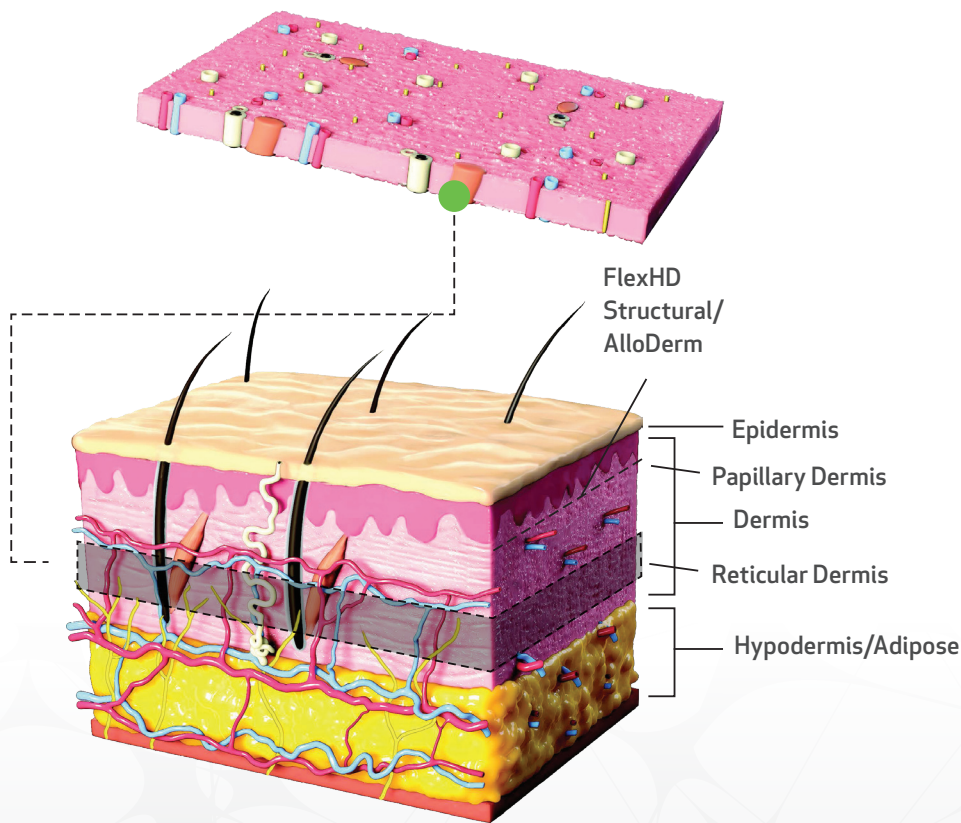
FlexHD
PLIABLE

MTF Biologics offers
the largest variety of
surgeon-designed ADMs.

TABLE OF CONTENTS

FLEXHD PLIABLE FACTS	3
FLEXHD PLIABLE PRE	6
FLEXHD PLIABLE MAX	7
FLEX HD PLIABLE SHAPED	8
FLEXHD PLIABLE RECTANGLES	10
FLEXHD PLIABLE PERFORATED	11

Since **FlexHD Pliable** was introduced in 2012, over **150,000 grafts** have been implanted in patients during plastic and reconstructive procedures.



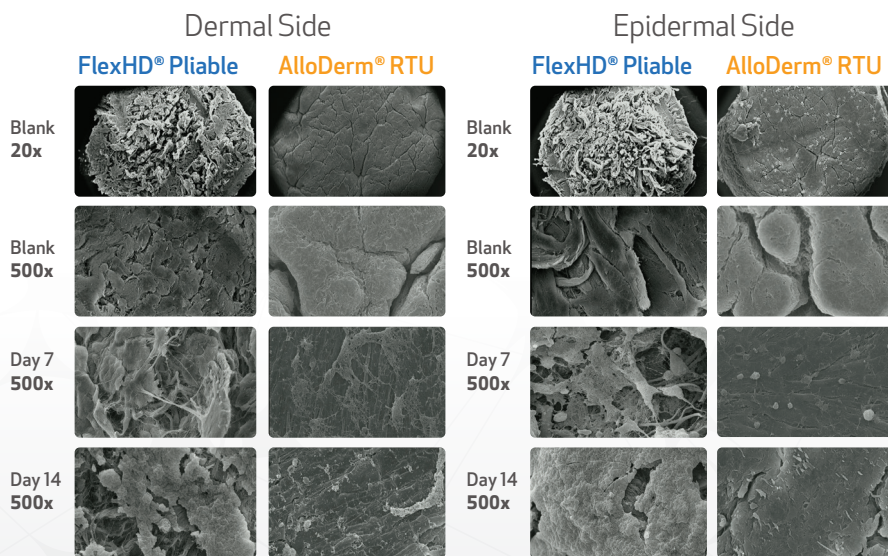
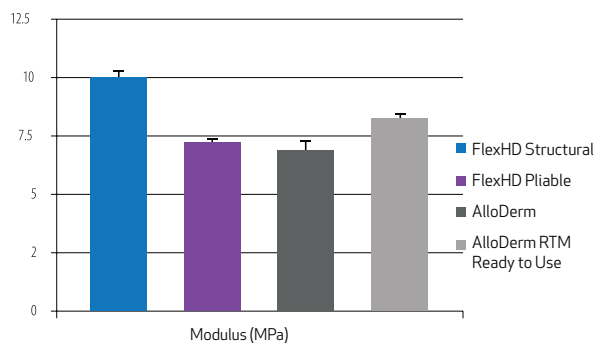
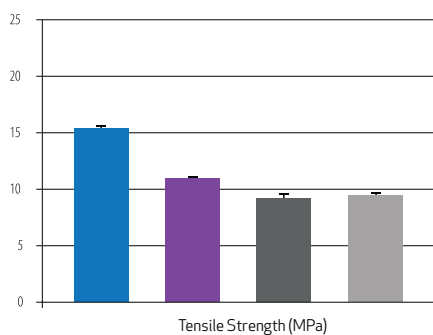
FlexHD Pliable is the only ADM cut from the deeper reticular layer of dermis where the tissue matrix is more open and porous than the papillary dermal layer from which other ADMs, including FlexHD Structural and AlloDerm, are derived.

In plastic and reconstructive procedures, a **strong yet supple** material that conforms to natural body contours is needed. FlexHD Pliable was **designed by surgeons** who found FlexHD Structural and other ADMs cut from the papillary dermis to be too stiff.

The Deeper Cut makes FlexHD Pliable Different

Exceptional Handling

- ²FlexHD Pliable demonstrates less tensile strength than FlexHD Structure but is still stronger than AlloDerm and AlloDerm RTU.
- ²FlexHD Pliable's modulus is lower than that of FlexHD Structure and AlloDerm RTM and equivalent to AlloDerm's.
- Combined, these features make FlexHD Pliable strong yet drapable and conforming.



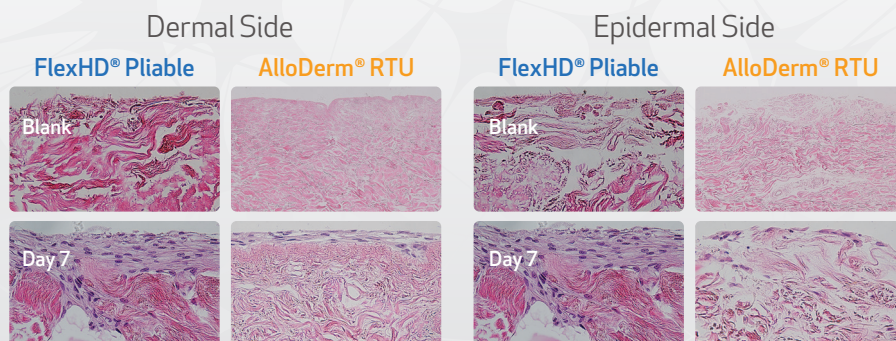
Exceptional Performance

²The more open and porous structure of the reticular layer may support cell attachment and a more extensive multi-layered matrix deposition than other ADMs.

SEM imaging demonstrates FlexHD Pliable readily supports fibroblast attachment and proliferation. By Day 7 and continuing through Day 14, a greater amount of new matrix is visible throughout FlexHD Pliable on both the dermal and epidermal sides compared to AlloDerm RTU. This may facilitate better graft integration and remodeling.

NO Sidedness

²Uniform cell infiltration on both epidermal and dermal sides of FlexHD Pliable may support better graft incorporation and remodeling.



Fibroblasts readily infiltrated and formed new extracellular matrix on the dermal and epidermal sides of FlexHD® Pliable. Similar performance was not observed on AlloDerm® RTU.

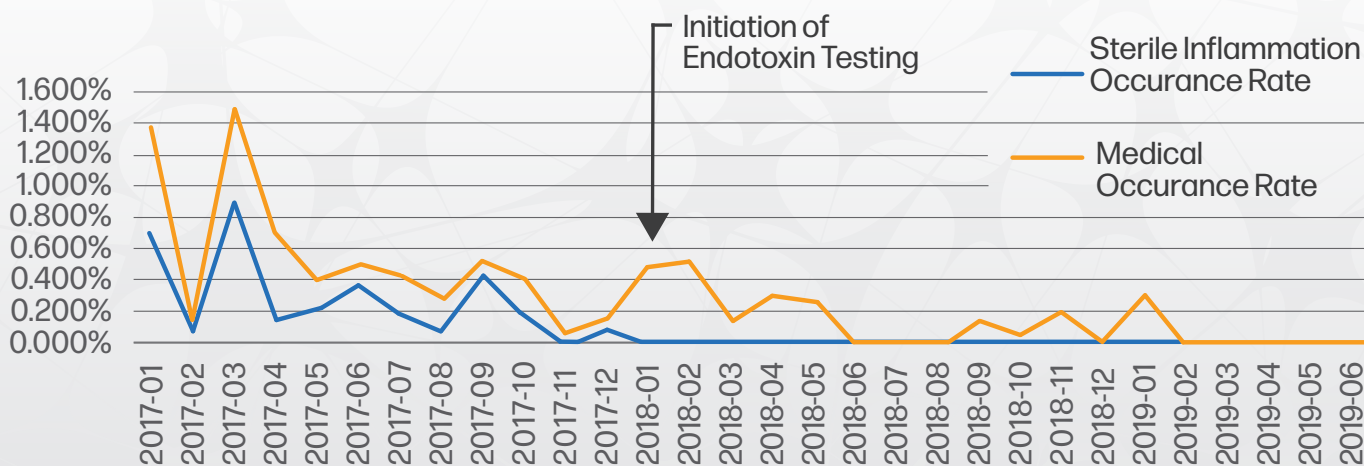
Nilsen, T. et al. Do Processing Methods Make a Difference in Acellular Dermal Matrix Properties? Aesthetic Surgery Journal. 2016, S1-S16.

Additional testing to ensure safety & efficacy

MTF Biologics has among the strictest donor criteria of any tissue bank, accepting less than 2% of donated tissues.

In addition to ensuring graft safety by screening for infectious diseases, MTF also performs endotoxin testing via the kinetic Chromogenic Limulus Amebocyte Lysate (LAL) method that relies on extreme reactivity of horseshoe crab (*Limulus Polyphemus*) amebocytes to endotoxin. If the level of endotoxin is higher than the maximum accepted tolerance, FlexHD grafts from that donor will not be released for surgical use.

Since implementation in January 2018, the reported incidence of sterile inflammation in patients receiving an MTF acellular dermal graft has sharply declined, contributing to improved clinical outcomes.



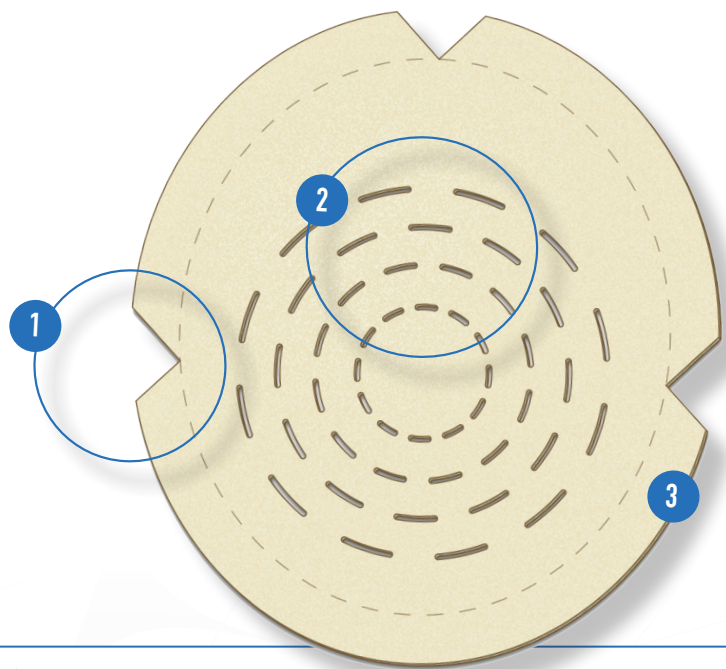
The graph above shows sterile inflammation and medical complaint rates for MTF dermal grafts for the period of Jan 2017 through June 2019. After implementation of LAL testing in Jan 2018, complaints for sterile inflammation dropped dramatically.

PREshaped Graft Features Intuitive Design for Ease of Use and Improved Patient Outcomes



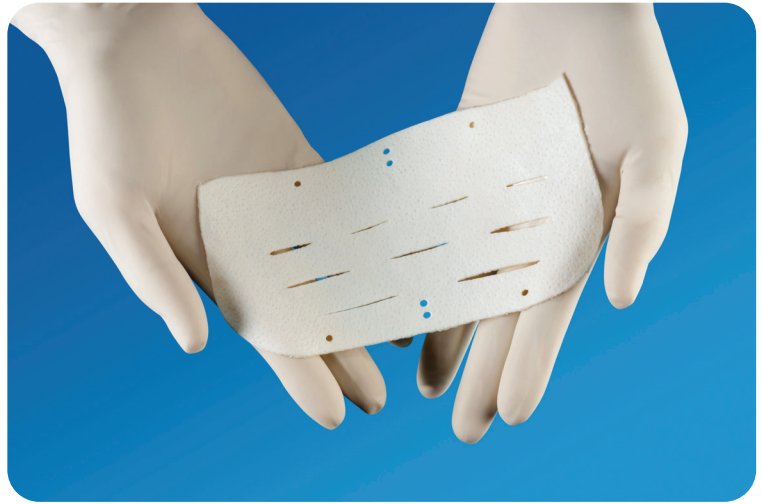
FlexHD Pliable PRE graft features:

- 1 **AXIS CUTOUTS** guide placement
- 2 **CONCENTRIC FENESTRATIONS** allow graft expansion
- 3 **FOLD-UNDER CUFF** provides superior reinforcement



FlexHD Pliable PRE

ITEM #	THICKNESS	SIZE (L) X (W)	AREA
PP0001	0.7-1.7 MM	S (17.5 CM X 20 CM)	268 SQ CM
PP2001	1.8-2.4 MM	S (17.5 CM X 20 CM)	268 SQ CM
PP1500	0.7-1.7 MM	M (19 CM X 22 CM)	321 SQ CM
PP1502	1.8-2.4 MM	M (19 CM X 22 CM)	321 SQ CM
PP0002	0.7-1.7 MM	L (21 CM X 24 CM)	389 SQ CM
PP2002	1.8-2.4 MM	L (21 CM X 24 CM)	389 SQ CM
PP0003	0.7-1.7 MM	XL (23 CM X 26 CM)	463 SQ CM
PP2003	1.8-2.4 MM	XL (23 CM X 26 CM)	463 SQ CM

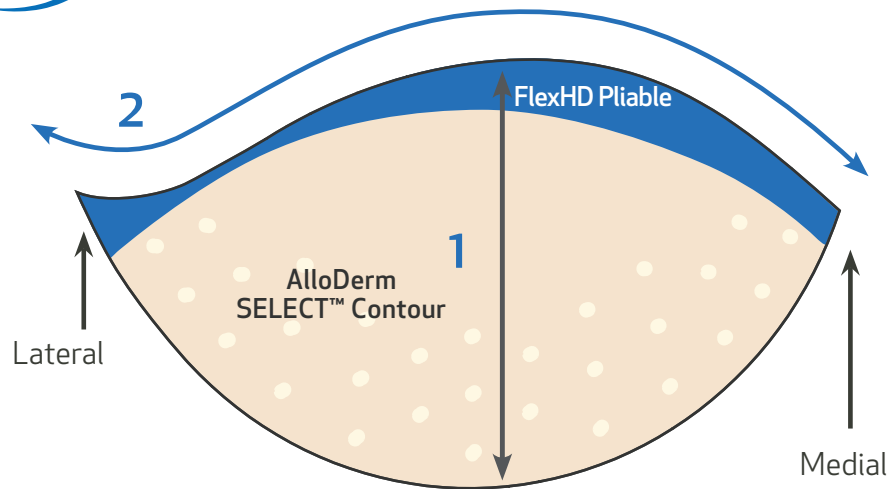


FlexHD Pliable MAX

Engineered to **MAXimize** your plastic & reconstructive outcomes

The uniquely fenestrated design of FlexHD Pliable MAX provides **more flexibility and surface area**, minimizing office visits and OR time.

ITEM #	SIZE (L) X (W)	AREA
FN0816	8 CM X 16 CM	128 SQ CM



Reshaping the standards of Plastic & Reconstructive Surgery

More coverage where you need it most.

Compared to AlloDerm Select Contour grafts, FlexHD Pliable Shaped provides:

- Additional height¹ to achieve sufficient arc length
- Asymmetric wing² for more lateral coverage
- Better anatomic fit to ensure full apposition between the ADM and overlying skin, minimizing the risk of fluid accumulation



FlexHD Pliable **Shaped**, Thin
(0.7-1.7mm thick)

FlexHD Pliable **Shaped**, Thick
(1.8-2.4 mm thick)

ITEM #	SIZE (L) X (W)	AREA	ITEM #	SIZE (L) X (W)	AREA
SP0001 (XS)	9 CM X 15 CM	90 SQ CM	SP2001 (XS)	9 CM X 15 CM	90 SQ CM
SP1500 (S)	10 CM X 17 CM	117 SQ CM	SP1502 (S)	10 CM X 17 CM	117 SQ CM
SP0002 (M)	11 CM X 20 CM	148 SQ CM	SP2002 (M)	11 CM X 20 CM	148 SQ CM
SP0003 (L)	13 CM X 22 CM	189 SQ CM	SP2003 (L)	13 CM X 22 CM	189 SQ CM
SP0004 (XL)	15 CM X 24 CM	250 SQ CM	SP2004 (XL)	15 CM X 24 CM	250 SQ CM

FlexHD Pliable **Shaped**
Perforated, Thin (0.7-1.7mm thick)

FlexHD Pliable **Shaped**
Perforated, Thick (1.8-2.4 mm thick)

ITEM #	SIZE (L) X (W)	AREA	ITEM #	SIZE (L) X (W)	AREA
SF1000 (XS)	9 CM X 15 CM	90 SQ CM	SF1002 (XS)	9 CM X 15 CM	90 SQ CM
SF1500 (S)	10 CM X 17 CM	117 SQ CM	SF1502 (S)	10 CM X 17 CM	117 SQ CM
SF2000 (M)	11 CM X 20 CM	148 SQ CM	SF2002 (M)	11 CM X 20 CM	148 SQ CM
SF3000 (L)	13 CM X 22 CM	189 SQ CM	SF3002 (L)	13 CM X 22 CM	189 SQ CM
SF4000 (XL)	15 CM X 24 CM	250 SQ CM	SF4002 (XL)	15 CM X 24 CM	250 SQ CM

Rectangles

From 1x2cm to 20x20cm graft sizes,
WE'VE GOT YOU COVERED.

FlexHD Pliable grafts are available in **11 different sizes and 2 thicknesses**, as well as **perforated and non-perforated options** to meet all your plastic and reconstructive needs.

FlexHD Pliable Thin, (0.7-1.7mm)

ITEM #	SIZE (L) X (W)	AREA
HP1102	1 CM X 2 CM	2 SQ CM
HP1204	2 CM X 4 CM	8 SQ CM
HP1407	4 CM X 7 CM	28 SQ CM
HP1412	4 CM X 12 CM	48 SQ CM
HP1416	4 CM X 16 CM	64 SQ CM
HP1616	6 CM X 16 CM	96 SQ CM
HP1816	8 CM X 16 CM	128 SQ CM
HP1208	8 CM X 20 CM	160 SQ CM
HP1220	12 CM X 20 CM	240 SQ CM
HP1620	16 CM X 20 CM	320 SQ CM
HP1202	20 CM X 20 CM	400 SQ CM

FlexHD Pliable, Thick (1.8-2.4mm)

ITEM #	SIZE (L) X (W)	AREA
HP2616	6 CM X 16 CM	96 SQ CM
HP2816	8 CM X 16 CM	128 SQ CM
HP2620	16 CM X 20 CM	320 SQ CM
HP2202	20 CM X 20 CM	400 SQ CM



FlexHD[®]

PLIABLE

FlexHD Pliable Perforated grafts contain 2mm perforations in the lower third of the graft only, for **added protection against dehiscence** while ensuring:



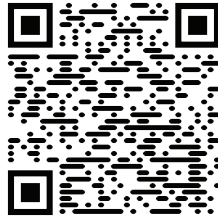
- Better drainage and egress of fluid
- Better tissue in-growth and incorporation
- Reduced seromas
- O.R. time savings

FlexHD Pliable **Perforated**, Thin (0.7-1.7mm)

ITEM #	SIZE (L) X (W)	AREA
PF1616	6 CM X 16 CM	96 SQ CM
PF1816	8 CM X 16 CM	128 SQ CM
PF1208	8 CM X 20 CM	160 SQ CM
PF1220	12 CM X 20 CM	240 SQ CM
PF1620	16 CM X 20 CM	320 SQ CM
PF1202	20 CM X 20 CM	400 SQ CM

FlexHD Pliable **Perforated**, Thick (1.8-2.4mm)

ITEM #	SIZE (L) X (W)	AREA
PF2616	6 CM X 16 CM	96 SQ CM
PF2816	8 CM X 16 CM	128 SQ CM
PF2208	8 CM X 20 CM	160 SQ CM
PF2220	12 CM X 20 CM	240 SQ CM
PF2620	16 CM X 20 CM	320 SQ CM
PF2202	20 CM X 20 CM	400 SQ CM



Scan this QR Code to contact a member of the MTF Medical Information team with questions about FlexHD Pliable.



[mtfbiologics.org](https://www.mtfbiologics.org)

With more than 30 published studies demonstrating safety and efficacy, and zero bacterial and viral disease transmission, it's no surprise FlexHD Pliable is **one of the most requested ADMs** on the market today.



1 Market Recap. Q323 US Breast Matrices Market By Segment. SmartTrak ©2024 BioMed GPS, Inc.

2 Development of a Novel Acellular Dermal Matrix (ADM) Designed Specifically for Plastic and Reconstructive Surgery. MTF Biologics R&D Department Updated 2021.

125 May St., Edison, NJ 08837 USA | (800) 433-6576 | 1-732-661-0202 | www.mtfbiologics.org

MTF Biologics and FlexHD are registered trademarks of Musculoskeletal Transplant Foundation. ©2024 Musculoskeletal Transplant Foundation.

MKTG-1329 Rev. 1